

C & H HOG FARMS GESTATION-FARROWING FARM AS BUILT ENGINEERING PLAN SHEETS

SECTION 26, T 15 N, R 20 W
NEWTON COUNTY, ARKANSAS

DATE: APRIL 12, 2013

SHEET INDEX

- SHEET 7 – WASTE STORAGE POND FINAL DESIGN
- SHEET 8 – PROPOSED SITE PLAN CROSS SECTION

- SHEET 10 – WASTE STORAGE POND & BARN CROSS SECTIONS
- SHEET 11 – WASTE STORAGE POND CROSS SECTIONS

- SHEET 13 – POND INLET & MAXIMUM BERM DETAILS
- SHEET 14 – WASTE STORAGE POND 1 STAGE STORAGE TABLE
- SHEET 15 – WASTE STORAGE POND 2 STAGE STORAGE TABLE

GENERAL NOTES



No.	Revision/Issue	Date
1	AS BUILT	4/12/13

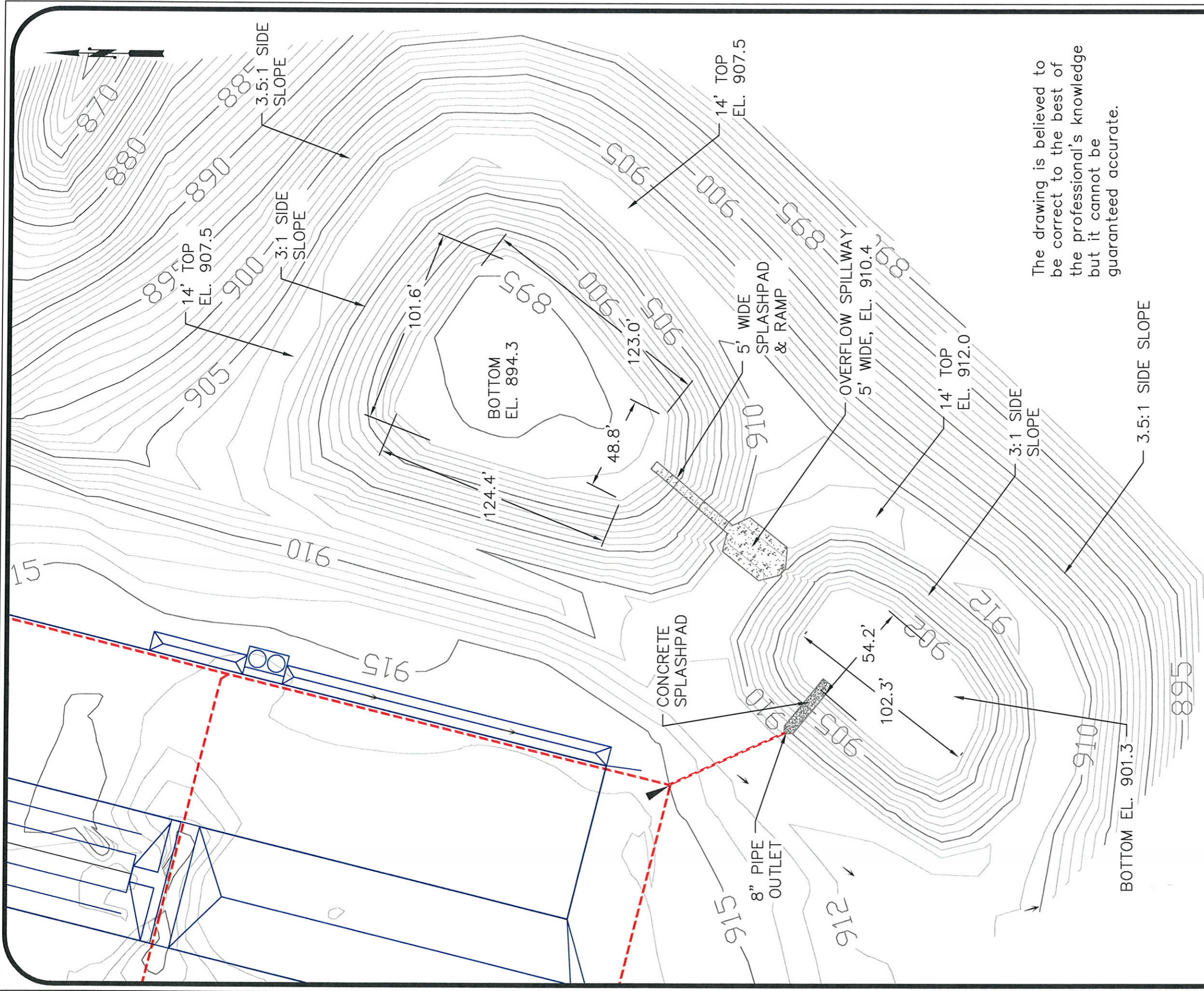
DeHaan, Grabs & Associates, LLC
Consulting Engineers
PO Box 522, Mandan, ND 58554
(701) 663-1116, FAX: (701) 667-1356
www.dgaengineering.com

**C & H HOG FARMS
GESTATION-FARROWING FARM**

SECTION 26, T 15 N, R 20 W
NEWTON COUNTY, AR

COVER SHEET

DATE: JUN 1, 2012	COVER
SCALE: NONE	
DRAWN BY: NAP	
CHECKED BY: DLD	



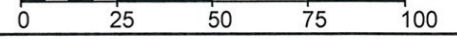
The drawing is believed to be correct to the best of the professional's knowledge but it cannot be guaranteed accurate.

GENERAL NOTES

LEGEND

- BENCHMARK
- BUILDINGS
- FENCELINE
- CULVERT/PIPE
- DRAINAGE ARROW

SCALE, FEET



No.	Revision/Issue	Date
1	As Built	4/1/13

DeHaan, Grabs & Associates, LLC
 Consulting Engineers
 PO Box 522, Mandan, ND 58554
 (701) 663-1116, FAX: (701) 667-1356
 www.dgaengineering.com

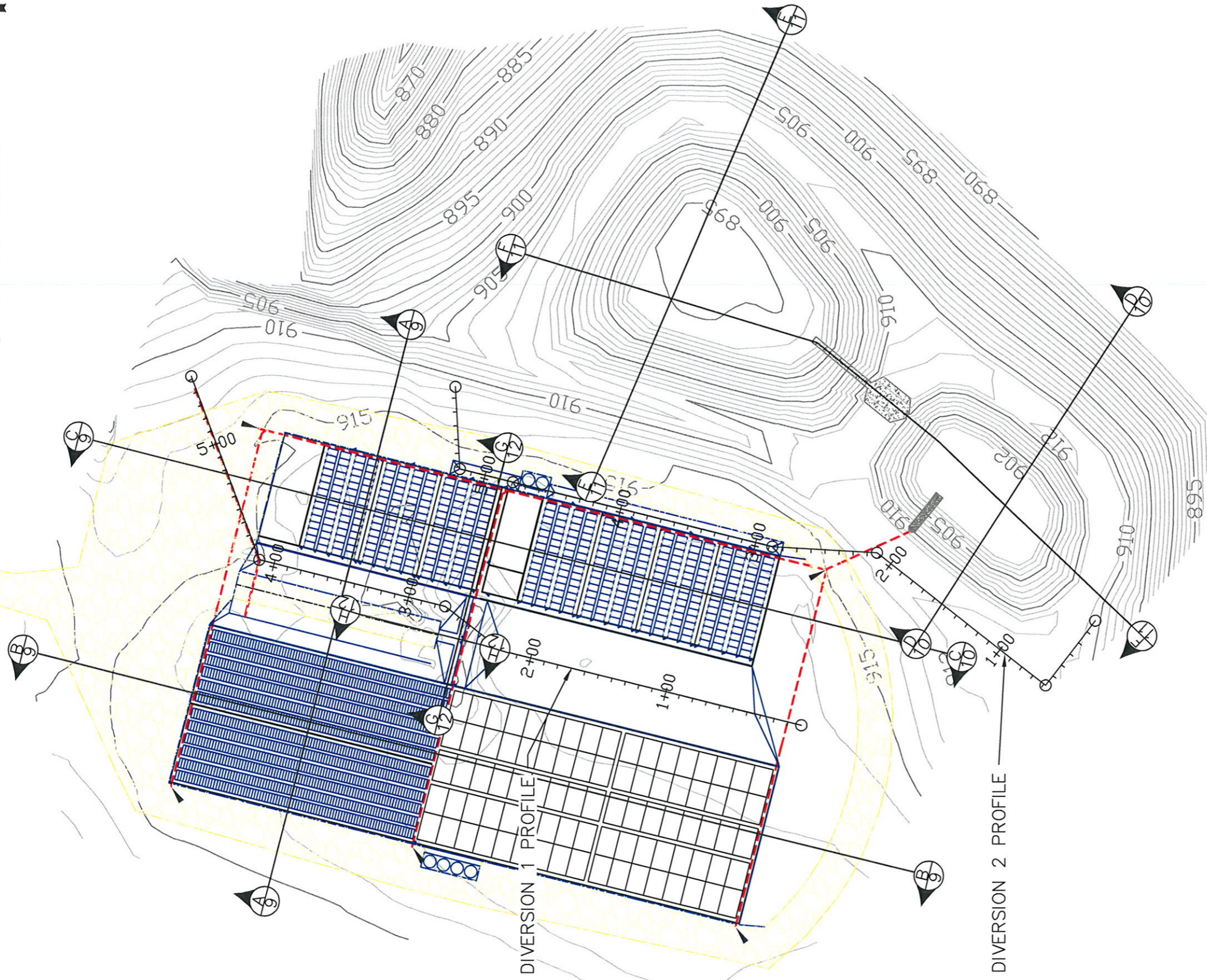
C & H HOG FARMS
 GESTATION-FARROWING FARM

SECTION 26, T 15 N, R 20 W
 NEWTON COUNTY, AR

WASTE STORAGE POND
FINAL DESIGN

DATE: APR 30, 2012	SHEET: 7
SCALE: 1" = 50'	
DRAWN BY: NAP	
CHECKED BY: DLD	

The drawing is believed to be correct to the best of the professional's knowledge but it cannot be guaranteed accurate.

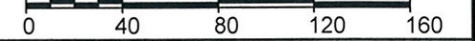


GENERAL NOTES

LEGEND

- ⊕ BENCHMARK
- ▭ BUILDINGS
- - - FENCELINE
- - - CULVERT/PIPE
- ← DRAINAGE ARROW

SCALE, FEET



1	As Built	4/1/13
No.	Revision/Issue	Date

DeHaan, Grabs & Associates, LLC
 Consulting Engineers
 PO Box 522, Mandan, ND 58554
 (701) 663-1116, FAX: (701) 667-1356
 www.dgaengineering.com

**C & H HOG FARMS
 GESTATION-FARROWING FARM**

SECTION 26, T 15 N, R 20 W
 NEWTON COUNTY, AR

**PROPOSED SITE PLAN
 CROSS SECTIONS**

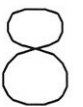
DATE:
 APR 30, 2012

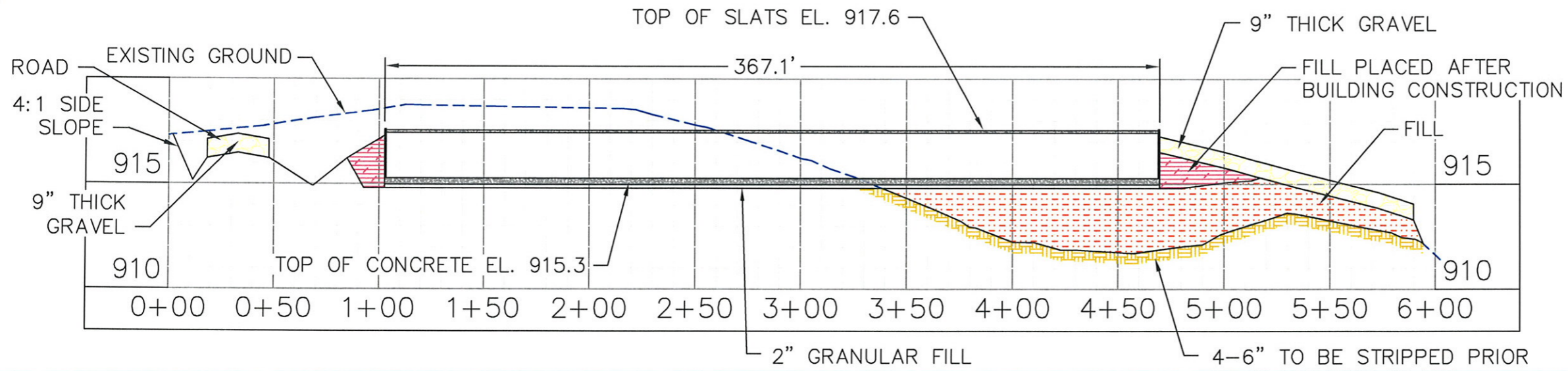
SCALE:
 1" = 80'

DRAWN BY:
 NAP

CHECKED BY:
 DLD

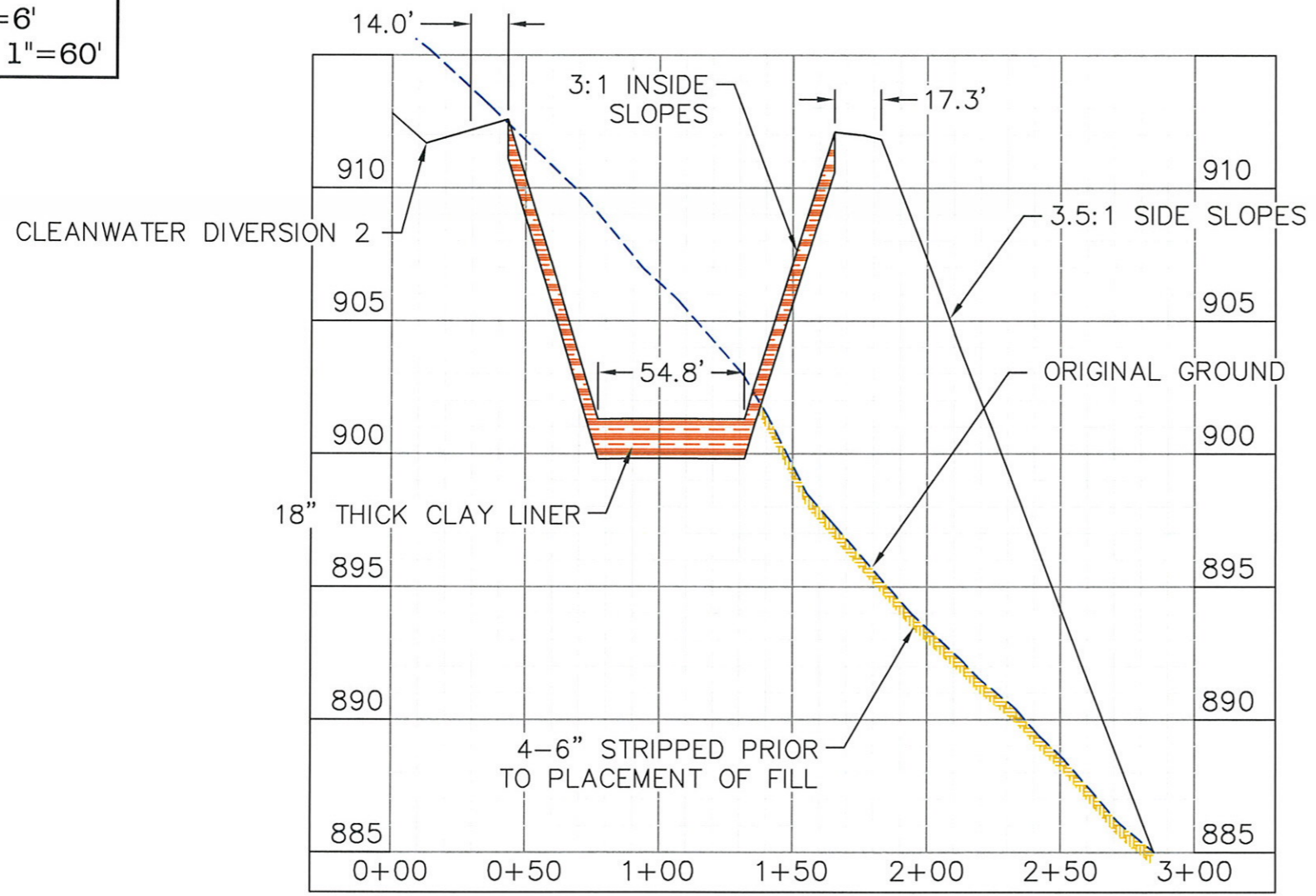
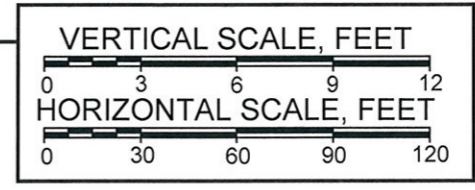
SHEET:





C-C
8
BARN CROSS SECTION

SCALE:
VERTICAL: 1"=6'
HORIZONTAL: 1"=60'



D-D
8
WASTE STORAGE POND 1 CROSS SECTION

The drawing is believed to be correct to the best of the professional's knowledge but it cannot be guaranteed accurate.

- GENERAL NOTES**
- GRAVEL
 - FILL
 - CONCRETE
 - STRIPPING
 - EXISTING GROUND



1	As Built	4/1/13
No.	Revision/Issue	Date

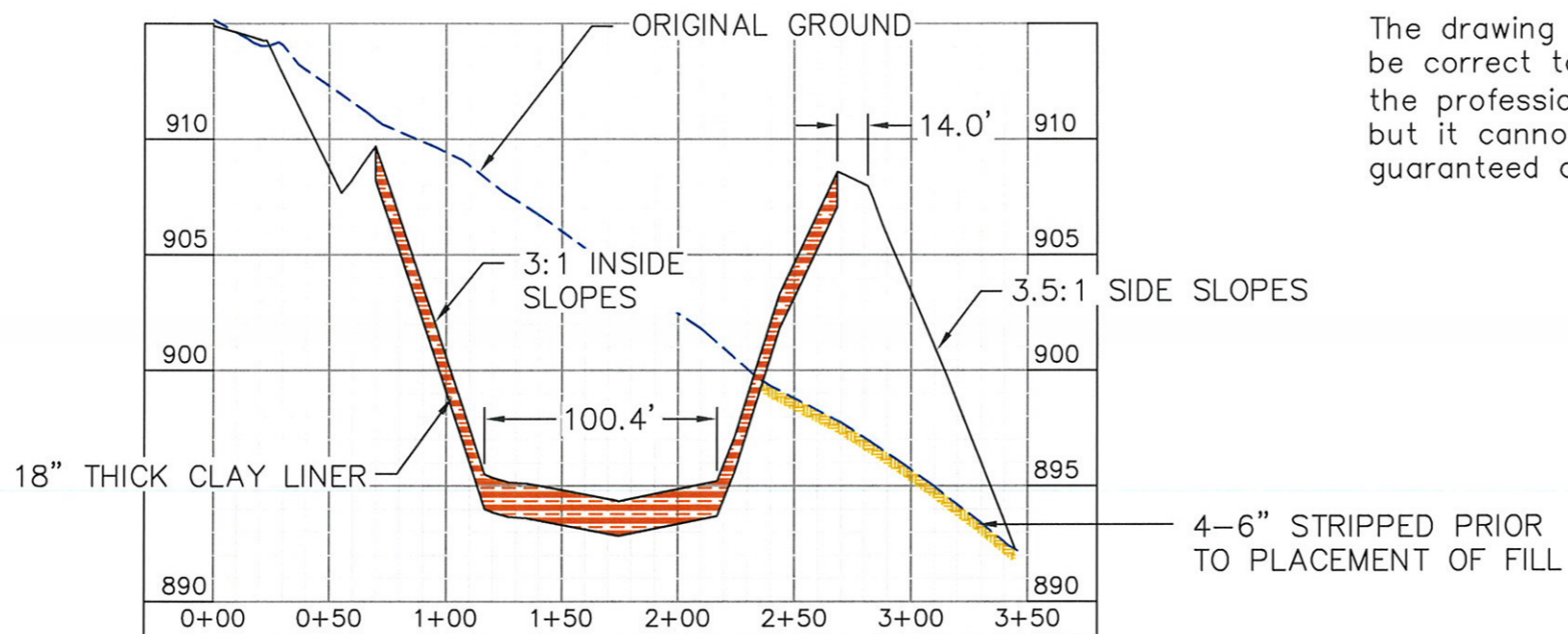
DeHaan, Grabs & Associates, LLC
Consulting Engineers
PO Box 522, Mandan, ND 58554
(701) 663-1116, FAX: (701) 667-1356
www.dgaengineering.com

C & H HOG FARMS
GESTATION-FARROWING FARM

SECTION 26, T 15 N, R 20 W
NEWTON COUNTY, AR

WASTE STORAGE POND & BARN CROSS SECTIONS

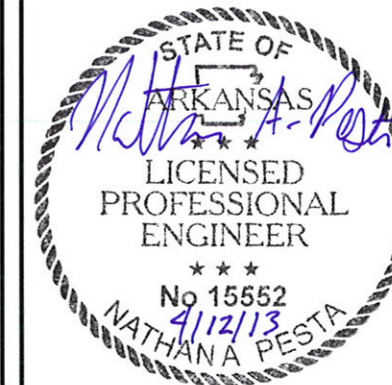
DATE: APR 30, 2012	SHEET: 10
SCALE: AS SHOWN	
DRAWN BY: NAP	
CHECKED BY: DLD	



The drawing is believed to be correct to the best of the professional's knowledge but it cannot be guaranteed accurate.

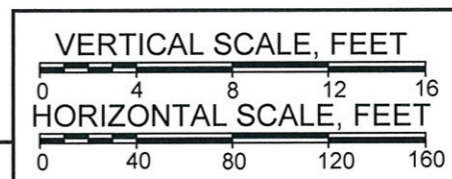
GENERAL NOTES

- GRAVEL
- FILL
- CONCRETE
- STRIPPING
- EXISTING GROUND

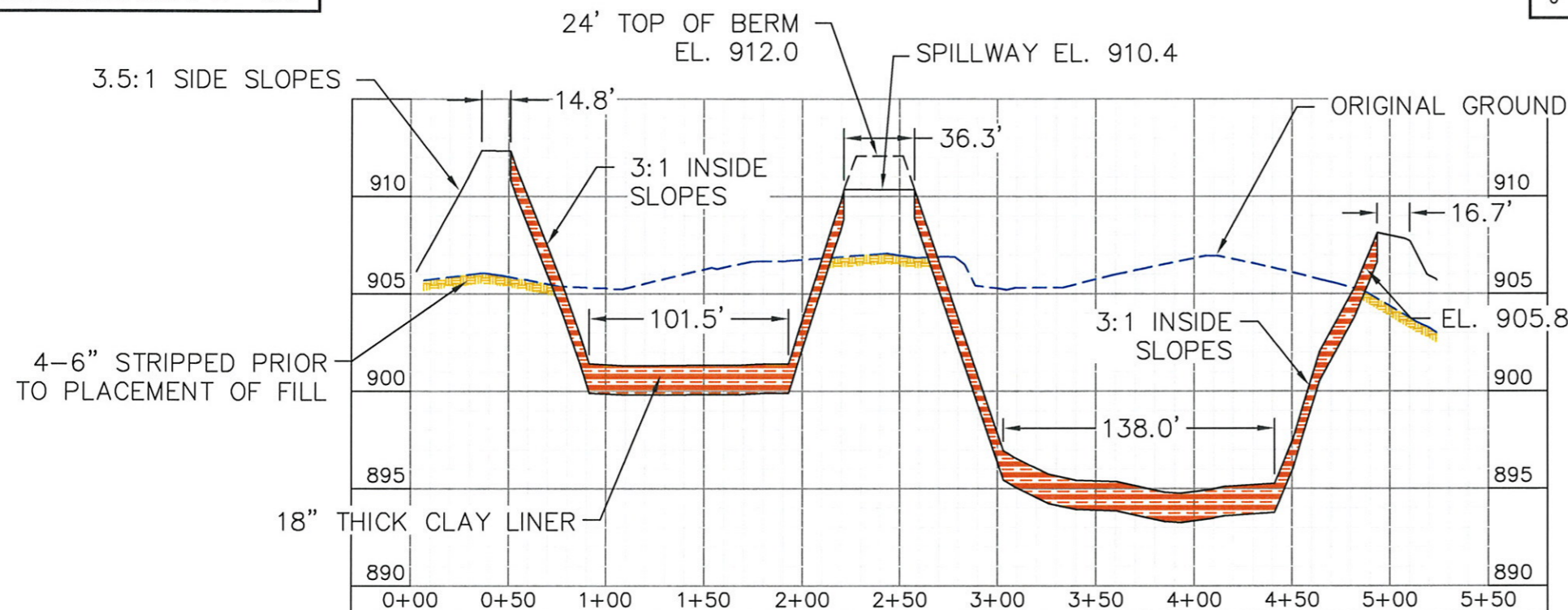


SCALE:
VERTICAL: 1"=8'
HORIZONTAL: 1"=80'

E-E
8 WASTE STORAGE POND 2 CROSS SECTION



No.	Revision/Issue	Date
1	As Built	4/1/13



F-F
8 WASTE STORAGE POND 1 & 2 CROSS SECTION

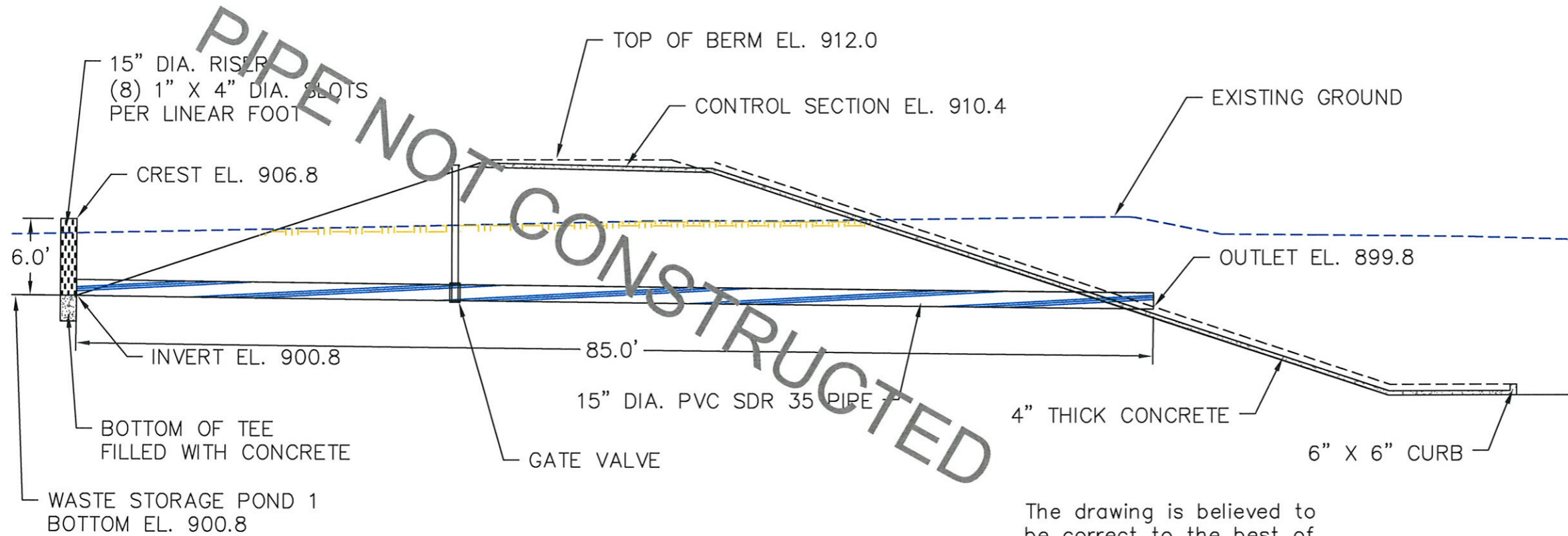
DeHaan, Grabs & Associates, LLC
Consulting Engineers
PO Box 522, Mandan, ND 58554
(701) 663-1116, FAX: (701) 667-1356
www.dgaengineering.com

C & H HOG FARMS
GESTATION-FARROWING FARM

SECTION 26, T 15 N, R 20 W
NEWTON COUNTY, AR

WASTE STORAGE POND CROSS SECTIONS

DATE: APR 30, 2012	SHEET: 11
SCALE: AS SHOWN	
DRAWN BY: NAP	
CHECKED BY: DLD	



PIPE NOT CONSTRUCTED

PIPE INLET DETAILS
SCALE: 1" = 10'

The drawing is believed to be correct to the best of the professional's knowledge but it cannot be guaranteed accurate.

GENERAL NOTES

	GRAVEL
	FILL
	CONCRETE
	STRIPPING
	EXISTING GROUND



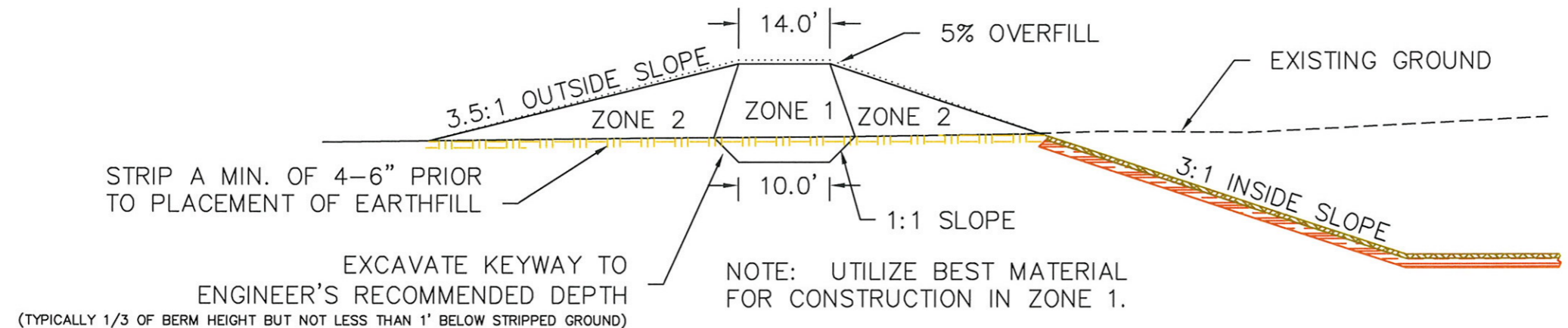
No.	Revision/Issue	Date

DeHaan, Grabs & Associates, LLC
Consulting Engineers
PO Box 522, Mandan, ND 58554
(701) 663-1116, FAX: (701) 667-1356
www.dgaengineering.com

C & H HOG FARMS
GESTATION-FARROWING FARM

SECTION 26, T 15 N, R 20 W
NEWTON COUNTY, AR

POND INLET & MAXIMUM BERM DETAILS

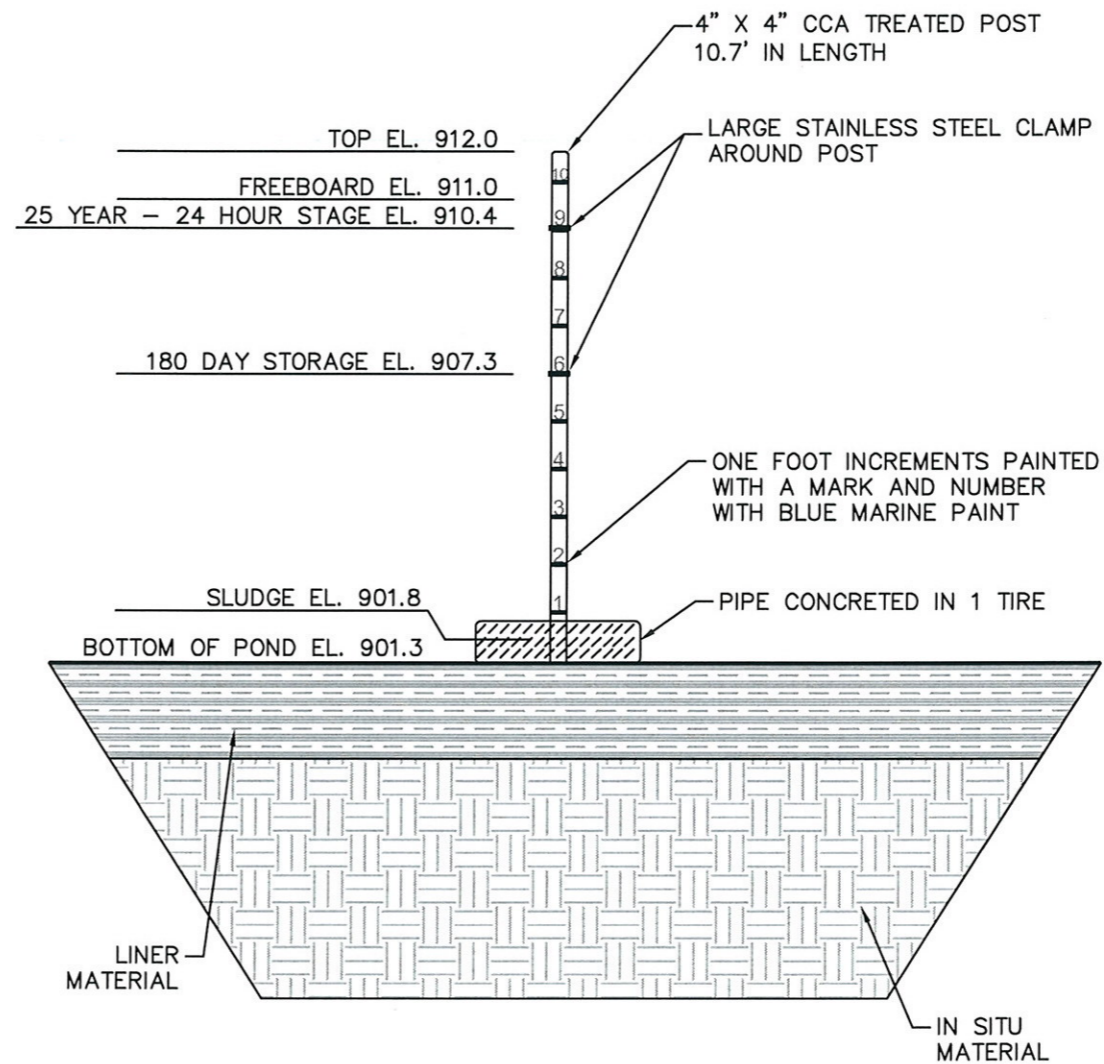


TYPICAL HOLDING POND MAXIMUM BERM DETAIL
NOT TO SCALE

DATE: APR 30, 2012	13
SCALE: AS SHOWN	
DRAWN BY: NAP	
CHECKED BY: DLD	

The drawing is believed to be correct to the best of the professional's knowledge but it cannot be guaranteed accurate.

Waste Storage Pond 1 Stage Storage Table						
Elevation (ft)	Stage (ft)	Area (ft ²)	Volume (ft ³)	Cum. Volume (ft ³)	Cum. Volume (acre-feet)	
912.0	10.7	20,153	28,793	118,918		Top
911.0	9.7	17,130	19,227	100,065	2.3	Freeboard
910.4	9.1	15,838	16,603	90,125	2.1	25 Year-24 Hour Stage/Overflow El.
909.8	8.5	14,915	7,316	80,838	1.9	
909.3	8.0	14,349	6,946	73,522	1.7	
908.8	7.5	13,435	6,585	66,576	1.5	
908.3	7.0	12,905	6,235	59,991	1.4	
907.8	6.5	12,035	5,898	53,756	1.2	
907.3	6.0	11,557	5,570	47,858	1.1	180 Day Stage
906.8	5.5	10,723	5,253	42,288	1.0	
906.3	5.0	10,289	4,947	37,035	0.9	
905.8	4.5	9,499	4,648	32,088	0.7	
905.3	4.0	9,093	4,360	27,440	0.6	
904.8	3.5	8,347	4,079	23,080	0.5	
904.3	3.0	7,969	3,808	19,001	0.4	
903.8	2.5	7,263	3,524	15,193	0.3	
903.3	2.0	6,833	3,294	11,669	0.3	
902.8	1.5	6,343	3,060	8,375	0.2	
902.3	1.0	5,897	2,837	5,315	0.1	
901.8	0.5	5,451	2,478	2,478	0.1	Sludge El.
901.3	0.0	0	0	0	0.0	Bottom



WASTE STORAGE POND 1

GENERAL NOTES

- INSITU MATERIAL
- CLAY LINER

SCALE, FEET



No.	Revision/Issue	Date
1	As Built	4/1/13

DeHaan, Grabs & Associates, LLC
 Consulting Engineers
 PO Box 522, Mandan, ND 58554
 (701) 663-1116, FAX: (701) 667-1356
 www.dgaengineering.com

C & H HOG FARMS
 GESTATION-FARROWING FARM

SECTION 26, T 15 N, R 20 W
 NEWTON COUNTY, AR

WASTE STORAGE POND 1
STAGE STORAGE TABLE

DATE: MAY 30, 2012	SHEET: 14
SCALE: 1" = 4'	
DRAWN BY: CAS	
CHECKED BY: DLD	

From: [Hogan, Stephen](#)
To: [Deardoff, Amy](#)
Subject: FW: 2-2
Date: Friday, April 12, 2013 10:58:09 AM
Attachments: [20130412101532.pdf](#)

Amy,

Please add this to zylab and the web. Permit No. ARG590001.

Thanks,

Stephen

From: Nathan Pesta [mailto:Nathanpdga@btinet.net]
Sent: Friday, April 12, 2013 10:29 AM
To: Hogan, Stephen
Cc: 'Jason Henson'; 'Richard Gray'; 'Patrick Pollack'
Subject: 2-2

Nathan A.Pesta P.E.
Senior Project Engineer
DeHaan, Grabs and Associates, LLC
Bus 701-663-1116
Cell 701-400-3950
Fax 701-667-1356
www.dgaengineering.com